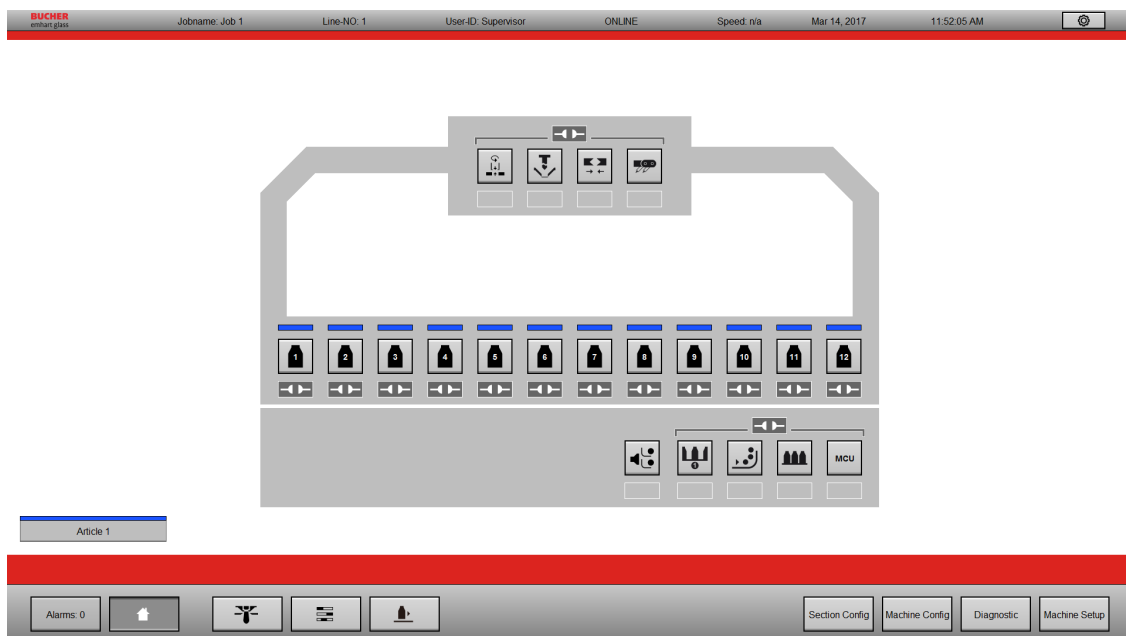


Technical News Bulletin

Steinhausen, February 2024



UC2 – New FlexIS user interface

- Versatile, powerful, and user friendly touch screen interface
- State of the art Server-Client architecture
- Multi article operation at the same time

Introduction

Together with the FlexIS 3 Bucher Emhart Glass introduces a new user interface called UC2 (User Console 2). The UC2 sets a new benchmark for the operation of an IS machine. It is a versatile, powerful and user-friendly touch screen interface. It uses the state-of-the-art Server-Client architecture, which allows a simultaneous operation on multiple clients.

It is also the foundation for any future developments. Especially for the Bucher Emhart Glass End to End developments.

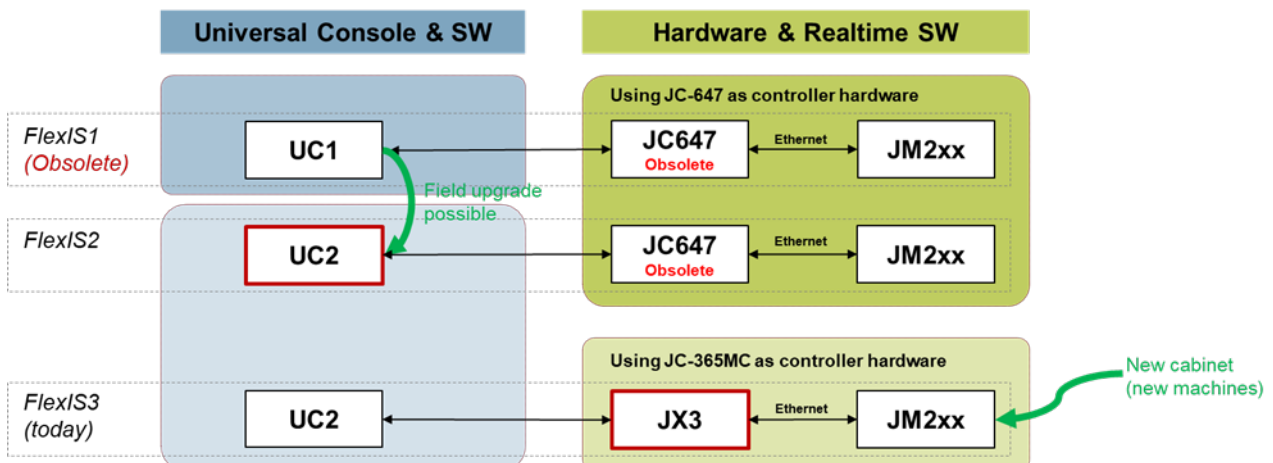
FlexIS Versions

The FlexIS control system consist of three major components:

- User Console (UC)
- Controller
- Servo Drives

FlexIS 3 replaces the UC as well as the real-time controller.

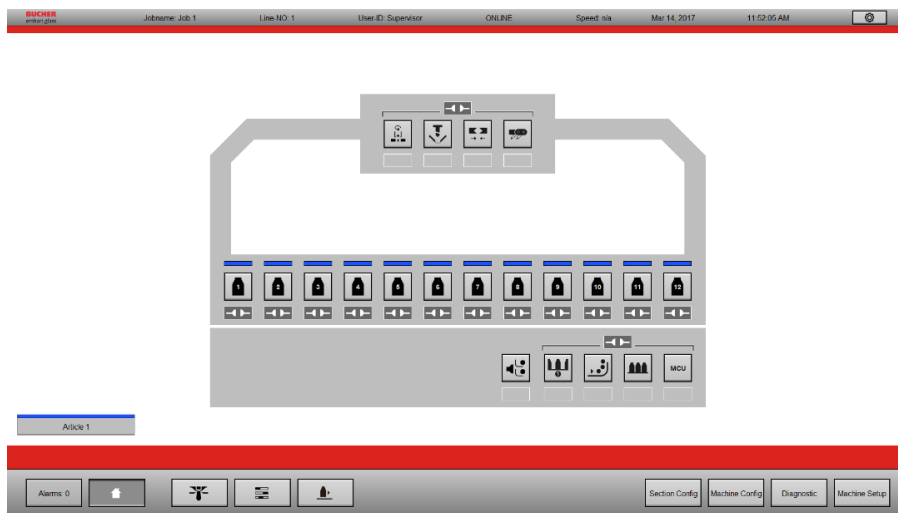
The UC is the interface of the control system for the machine operator. To be able to offer some of the latest developments to existing FlexIS 1 customers, we decided to make the new User Console UC2 available as an upgrade package for FlexIS 1. The FlexIS 1 with UC2 is named FlexIS 2.



User Interface

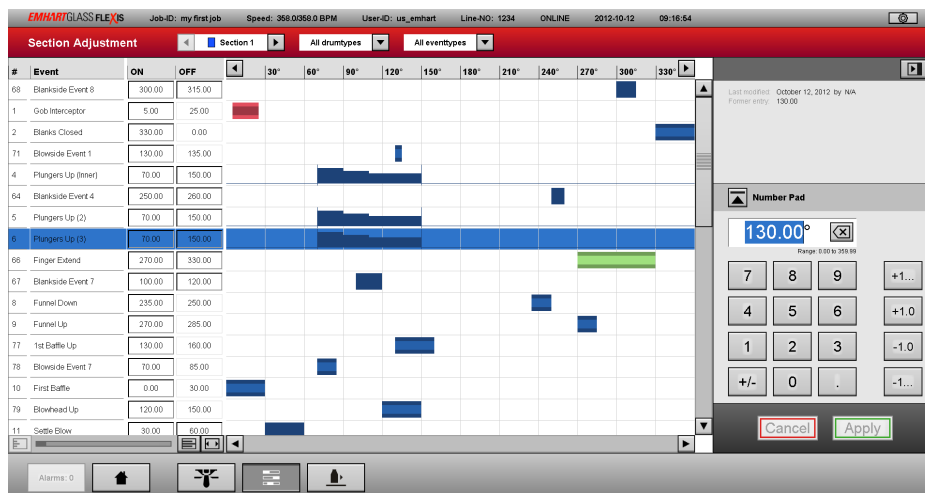
Interactive Home Screen

The home screen gives an overview of the status of the machine. It is the main navigation screen and allows direct access to all machine parameter screens.

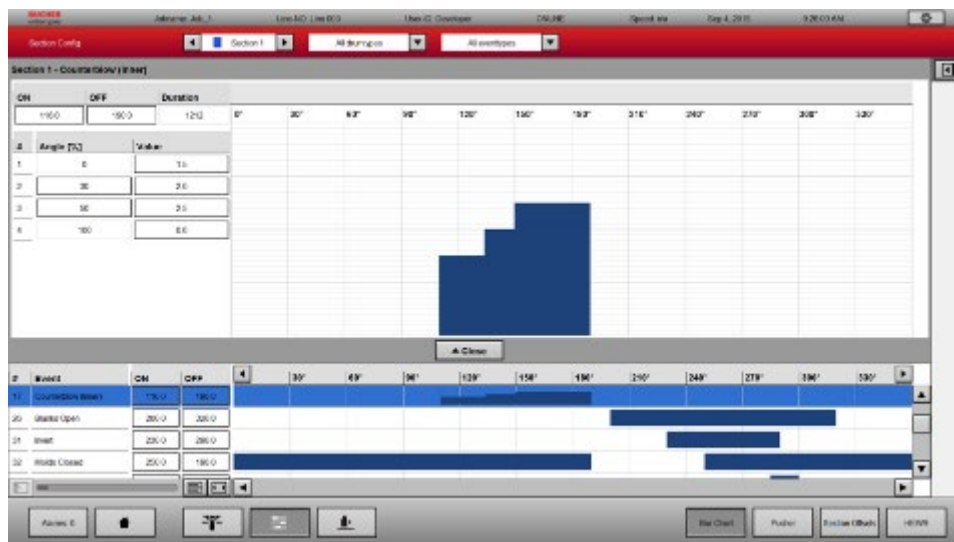


Enhanced Bar Chart

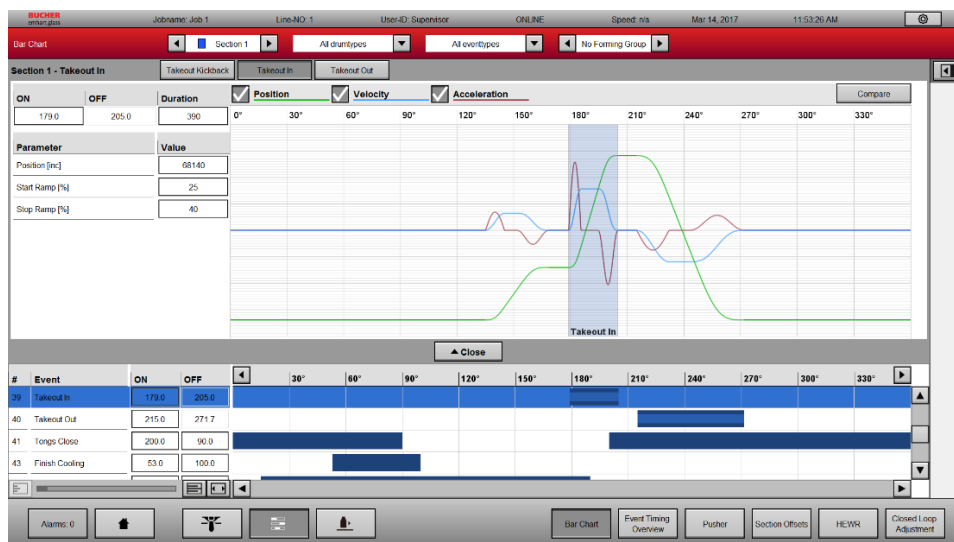
The new bar chart screen is the most noticeable enhancement for the operator. The bar chart screen contains all section settings, which need adjustment during a job run. It allows the adjustment of timing values, FPS valve pressures and servo motion parameters.



By clicking on the bar, you get a detailed view of the FPS pressure settings and its corresponding timing values. All FPS settings can be made in this screen.



The same is possible for all section servo axis. You can adjust the position, motion duration and ramp settings directly in the bar chart.



Multi Article Operation

A trend in the glass container industry is to run multiple articles on an IS machine at the same time. The UC2 is fully designed for this operation. It allows article settings to be stored and downloaded individually by section. The colors indicate which article is running in which section.

Section	1	2	3	4	5	6	7	8	9	10	11	12
Article	Article 1	Article 1	Article 1	Article 2	Article 2	Article 2	Article 1	Article 1	Article 1	Article 2	Article 2	Article 2
Job Number	1	11	2	12	10	3	4	9	7	5	8	6
Pusher Differential	0	0	0	0	0	0	0	0	0	0	0	0
Ware Sequence	-1	-1	-1	-1	-1	-1	-1	-1	-1	-1	-1	-1
Master Section	Set	Set	Set	Set	Set	Set	Set	Set	Set	Set	Set	Set

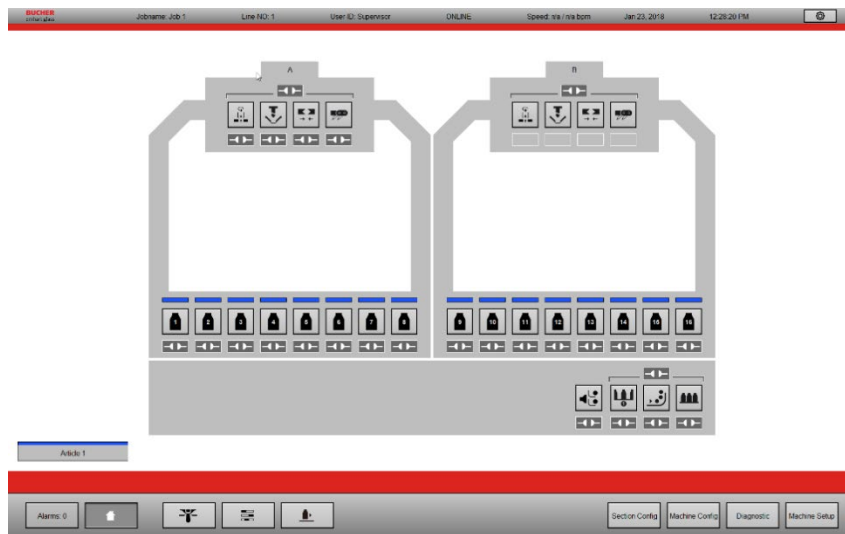
Parameter	Target (A)	Description:
Starting section	1	
Sections in operation	12	
Number of jobs	2	
Belt advance	10.500	
Gaps per machine cycle	0	

The same color codes and selection possibilities are shown when copying values.

No.	Event	ON	OFF
1	Interceptor	350.0	0.0
2	Blank Close	2.0	224.0
4	Blank Open	222.0	353.0
10	Plunger Up (Inner)	30.0	82.0
11	Plunger Up (2)	30.0	82.0
14	Plunger Down (Inner)	208.0	32.0
15	Plunger Down (2)	208.0	32.0
20	Funnel Down	11.0	86.0
21	Funnel Up	88.0	350.0
22	Baffle Down	45.0	80.0
23	Baffle Up	80.0	108.0
25	Baffle 2nd Down	110.0	210.0
26	Baffle 2nd Up	210.0	45.0
28	Settle Blow	46.0	72.0
30	Counter Blow (Inner)	120.0	204.0
31	Counter Blow (2)	120.0	204.0
40	Plunger Cooling (Inner)	290.0	340.0
41	Plunger Cooling (2)	290.0	340.0
50	Vacuum Assist (Inner)	50.0	70.0
51	Vacuum Assist (2)	50.0	70.0
60	Invert	253.0	286.7

Tandem

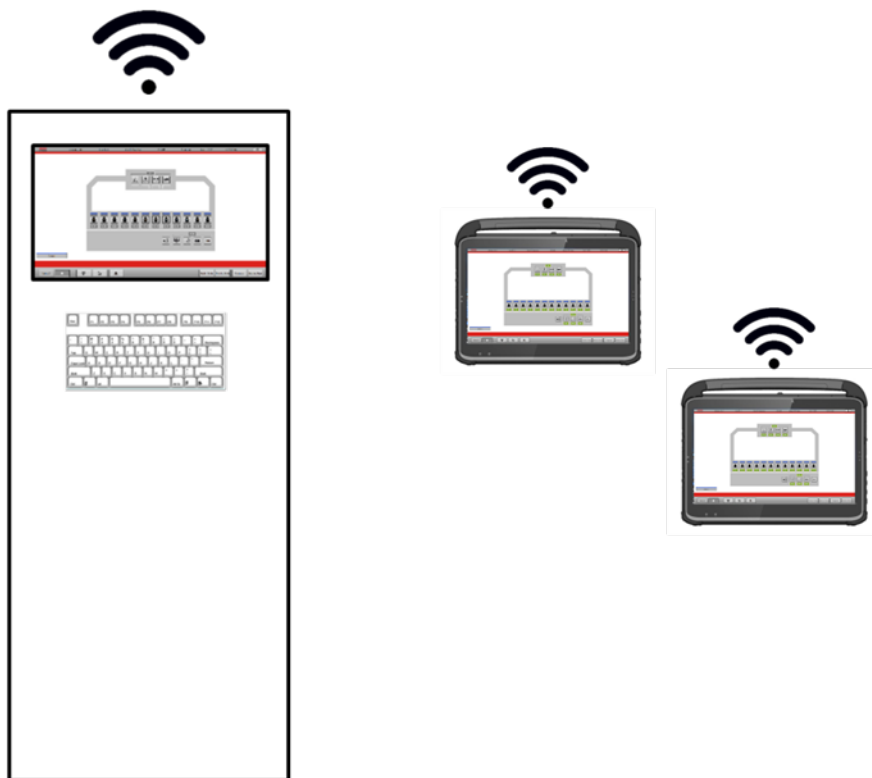
With UC2 you operate a tandem machine with only **one** UC. It's of course possible to use more than one client (user interface) simultaneously.



Multiple Clients

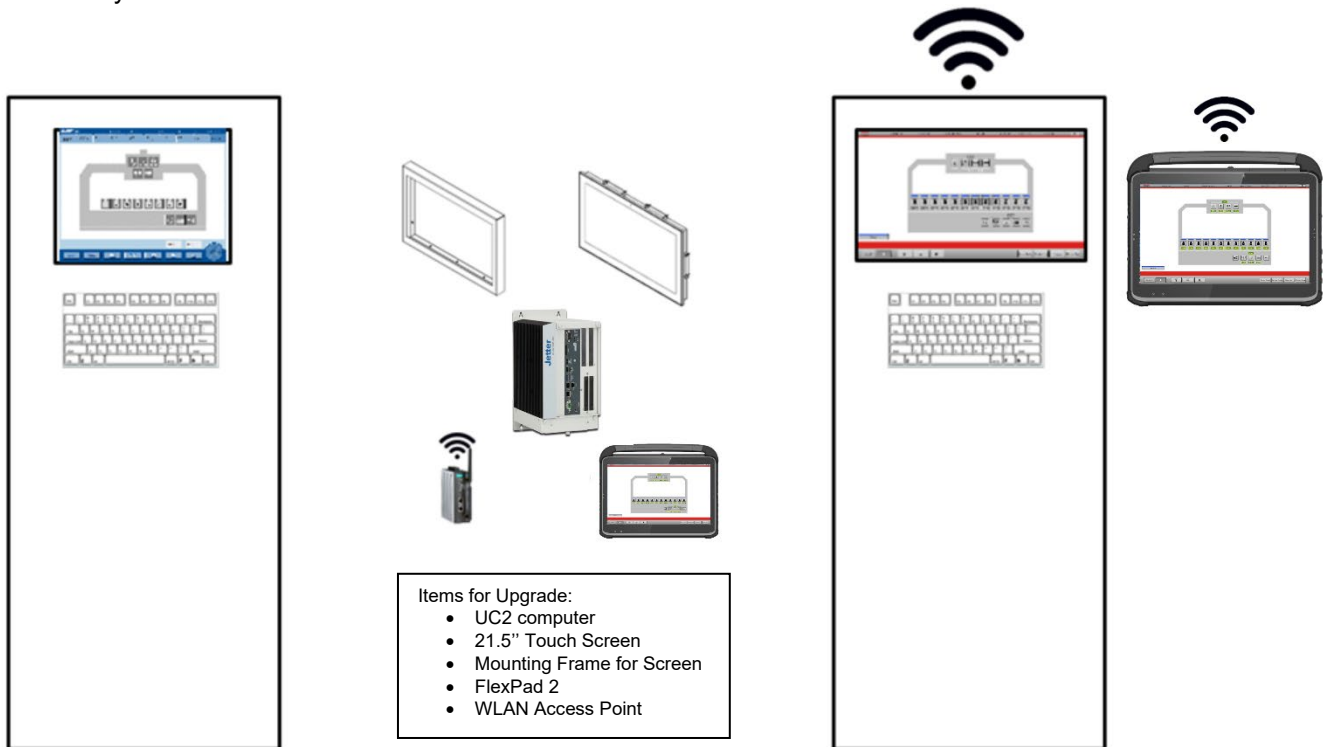
As already mentioned above it is possible to use more than one client (User Interface) at the same time. These clients work independently which means that you can operate on every client on different screens.

All clients send their individual changes to the UC2 server. The UC2 server is a central service, which handles all communication to the database, to the controllers and to all connected clients.



UC1 Upgrade to UC2

UC2 is not only available for FlexIS 3. It is easily possible to convert a FlexIS 1 system to FlexIS 2 by upgrading the UC1 system to UC2.



Parts to order for a UC2 upgrade:

601-11492	UC2 Computer
601-11071	Power Supply for UC2 Computer
601-10923	USB Cable
601-11115	DisplayPort Cable
601-11202	21.5" Touch Screen
601-12-10	WLAN Access Point Kit
601-11338	Ethernet Switch
601-20148	FlexPad 2
601-20151	Docking Station
601-11127	Adapter Frame for screen
601-11152	Adapter plate for FlexPad 2 Docking Station

Technical Specification

Size of cabinet

Width: 600 mm

Height: 2000 mm

Depth: 600 mm

Touch Screen

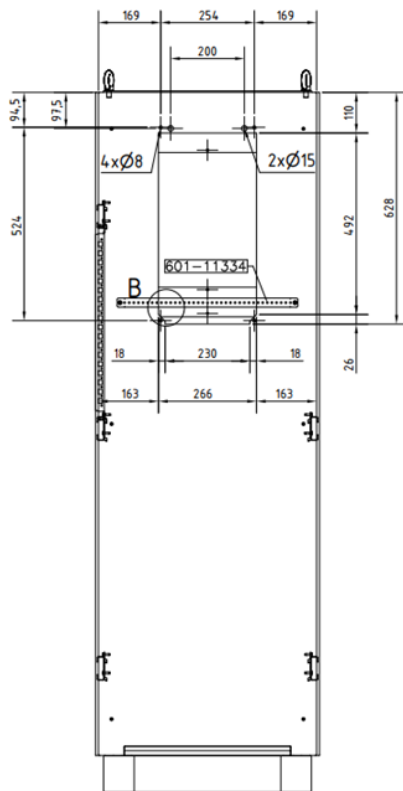
Screen Size: 21.5 inch

Screen Resolution: 1920x1080 pixel

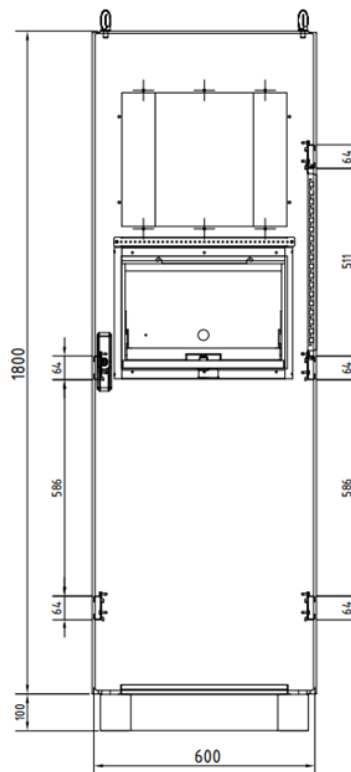
Power Requirements

Voltage: 230 VAC

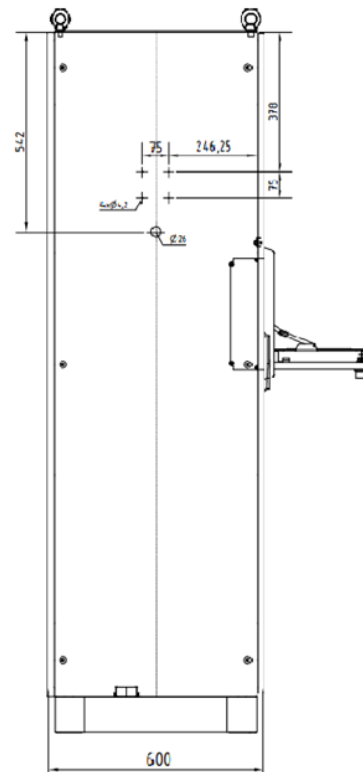
Power Consumption: 1 kVA



VIEW FROM REAR



FRONT VIEW



VIEW FROM THE LEFT