

# Cast iron offers stable handling

**E**mhart Glass, one of the leading suppliers of machinery and equipment to the glass manufacturing industry, has announced the launch of its 182 cast iron cross conveyor.

Featuring a simple design based around a cast iron girder, the cross conveyor is available in lengths of 4 - 7.5m (in 0.5m steps). Lengths over 5.5m are supplied in two pieces, connected with a jointing plate.

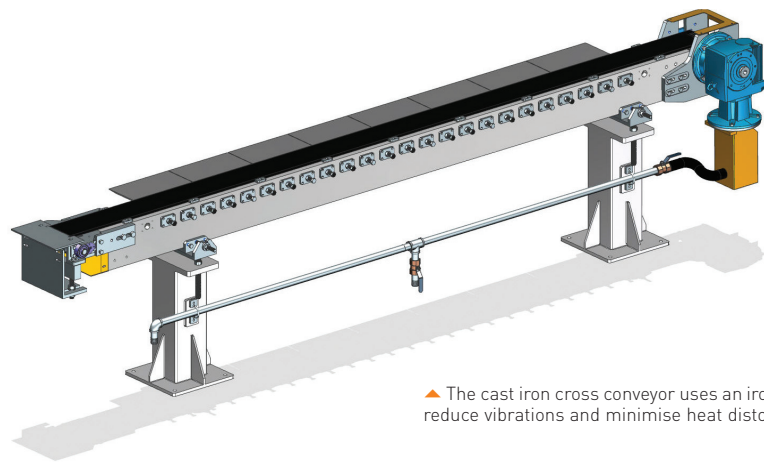
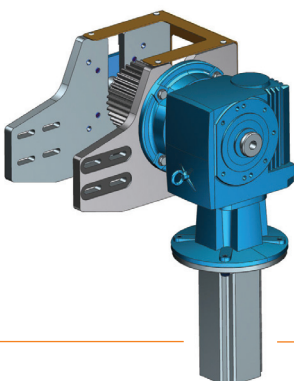
An iron girder is used to reduce vibrations and minimise distortion caused by heat. In contrast with traditional aluminium and fabricated steel cross conveyors, the company reports that the 182 does not need fluid cooling, which is aimed at reducing cost and avoiding the risk of girder distortion due to failed cooling.

The cast iron cross conveyor includes stainless steel dead-plates (easily adjustable for tilt and rock) and can be precisely attached to the end of the machine conveyor for an exact transition. It also features hardened spring-steel wear plates and a six inch (152.4mm) silent chain belt, with a gear ratio that caters for belt speeds from 6m/min to 72m/min.

It is compatible with a range of different lehr widths and heights, and four different heights of support are available. Supports are pre-designed to accommodate cooling piping for servomotors.

"As well as offering better, more stable container handling, it is easy to install and has no running costs for cooling. It's a 'one size fits all' solution, ready to work with any lehr, and it's built to last," said Jarmo Kammonen, Product Manager at Emhart Glass. ■

Emhart Glass, Switzerland.  
Website: [www.emhartglass.com](http://www.emhartglass.com)



▲ The cast iron cross conveyor uses an iron girder to reduce vibrations and minimise heat distortion.

## ROSARIO Eco-Equipment

Used and remanufactured Rosario machinery

# FOR SALE

### ROSARIO Base & Finish Eco-Inspector | model BF



€87.400\*  
12 months warranty

Demo model

The Rosario Base&Finish Eco-Inspector has the power to detect the most subtle defects in glass and has the flexibility to inspect a wide variety of oddly shaped glass containers, including oval and square articles.

### ROSARIO Eco-Palletizer | model PA60



- Model 2001.
- 4m Accumulation table.
  - New electrical panel with PLC.
  - Completely rewired.
  - Capacity: 1-1,5 layers/minute.
  - Stacking height pallet: 2,4m.

€42.660\*  
12 months warranty

Please check our website for latest offers!  
[www.Rosarioc2c.com](http://www.Rosarioc2c.com)

\*) Prices are valid for delivery ex-works Dongen

**ROSARIO c2c bv**

P.O. Box 56 • 5100 AB Dongen  
Eindsestraat 129a • 5105 NA Dongen • The Netherlands  
Tel: +31 13 5046655 • Fax: +31 13 5046650  
info@rosarioc2c.com • [www.rosarioc2c.com](http://www.rosarioc2c.com)