



A uniquely configurable platform for unmatched modular versatility and flexibility

FleXinspect BC, B, C



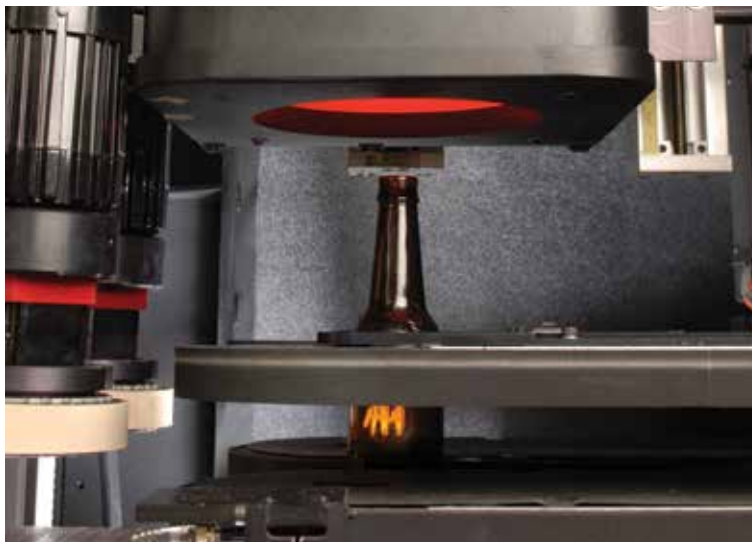
The inspection system for today and the future

FleXinspect BC inspections - B side

- Sealing surface
 - Base
 - Base stress
 - Vision plug gauging
 - Wire edge
 - Vision dip/saddle
 - Mold reading
 - Bottom up mold reading
- OR
- Top down alpha code/bottom dot reading

FleXinspect BC inspections - C side

- 6 views of "opaque" sidewall
 - 6 views of "transparent/cosmetic" sidewall
 - 6 views of "sidewall stress"
 - 6 views of "dimensional"
 - Height
 - Diameters
 - Verticalities
 - 6 views of "opaque shoulder"
- OR
- 6 views of "stress shoulder"



Container range

The FleXinspect BC, B and C inspect round and non-round containers with heights from 38 mm to 381 mm and diameters from 16 mm to 170 mm. The FleXinspect BC, B and C are designed to operate at speeds up to 600 BPM depending on container shape and size.

FleXinspect BC, B, C

- Unmatched inspection accuracy
- Maximum throughput at minimum speed
- Reduced job change downtime
- Optimized container stability at high speed

FleXinspect machines can be supplied as independent standalone units FleXinspect B and FleXinspect C, or joined together as a combined machine, FleXinspect BC.

FleXinspect is a reliable and uniquely configurable platform that easily allows additional inspection functionality and redundancy as required. The FleXinspect family provides unmatched modular versatility, value, and flexibility for glassmakers' current and future requirements.



Features

Unmatched inspection accuracy

- High resolution camera technology for improved defect detection
- Programmable long life LED illumination providing repeated, accurate results
- Stable, precise and efficient ware handling

Optimized container stability at high speed

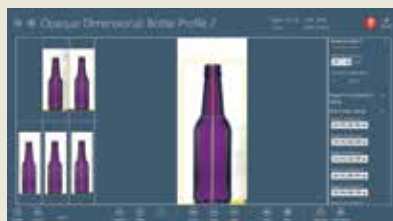
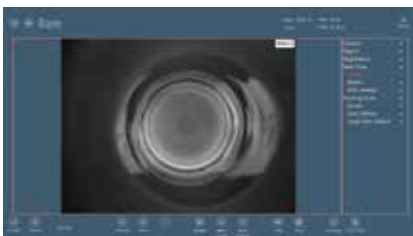
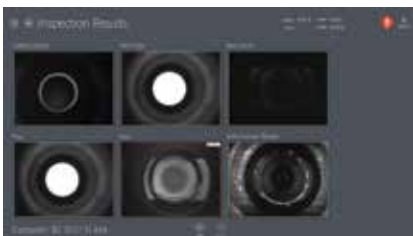
- Improved container stability for round, non-round and tapered ware due to individually adjustable servo belt handlers
- Integrated container separator releases container at conveyor speed
- Precision conveyors for smooth transfer through the inspection areas of the machine

Comprehensive vision inspection

The proprietary design of the FlexInspect BC includes 360-degree wraparound lighting and patterned lighting for 100% sidewall inspection of containers to precisely pinpoint both opaque and transparent defects. Polarized lighting is utilized for stress inspection to ensure detection of defects that may be missed by conventional methods. When equipped with a mold reading option, the FlexInspect BC mold-correlates results from all installed inspections.

Maximum throughput at minimum speed

- Ware volume sensors monitor bottle input (BPM) and automatically adjust conveyor speed for maximum throughput
- Integrated container spacing device delivers optimal spacing
- Minimum spacing allows for reduced linear conveying speeds



Specifications

Power requirements

380 to 480 VAC, 3 Phase, 25 Amps

NOTE: Transformer required for any other voltage.

Air requirements

Minimum 3.5 bar nominal [50 psi]

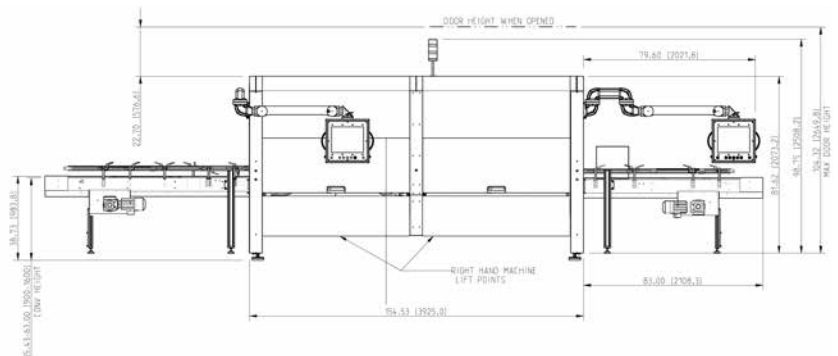
Maximum 0.8 to 0.85 m3/minute

Environmental considerations

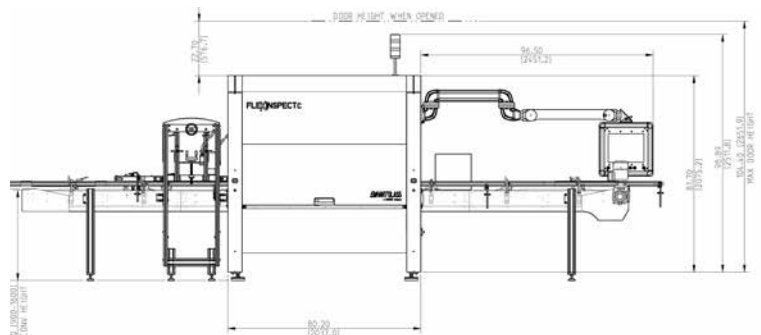
Temperature maximum 50 °C [122 °F]

Relative humidity Max. 95% relative humidity (non-condensing)

FleXinspect BC



FleXinspect B/C



Specifications are subject to change. Actual performance depends on specific application, container size, and line speed. Dimensions represent nominal machine size and are not for installation purposes.

Emhart Glass Worldwide Presence

Principal
Emhart Glass SA
Hinterbergstrasse 22
CH-6330 Cham, Switzerland
Tel. +41 41 749 42 00 Fax +41 41 749 42 71

Leipzig Germany
Tel. +49 341 250773 20 Fax +49 341 250773 21

Savona Italy
Tel. +39 019 51 66 1 Fax +39 019 51 66 301

Kawasaki Japan
Tel. +81 44 222 7371 Fax +81 44 222 4868

Johor Bahru Malaysia
Tel. +607 863 1122 Fax +607 863 7717

Singapore
Tel. +65 6778 1466 Fax +65 6778 9433

Örebro Sweden
Tel. +46 19 307 500 Fax +46 19 307 501

Sundsvall Sweden
Tel. +46 60 199 100 Fax +46 60 199 261

St. Petersburg FL USA
Tel. +1 727 471 1113 Fax +1 727 471 1290

Elmira NY USA
Tel. +1 607 735 2600 Fax +1 607 735 2601

Windsor CT USA
Tel. +1 860 298 7340 Fax +1 860 298 7395

Owensville MO USA
Tel. +1 573 437 2132 Fax +1 573 437 3146

Perrysburg OH USA
Tel. +1 567 336 7733 Fax +1 567 336 8727