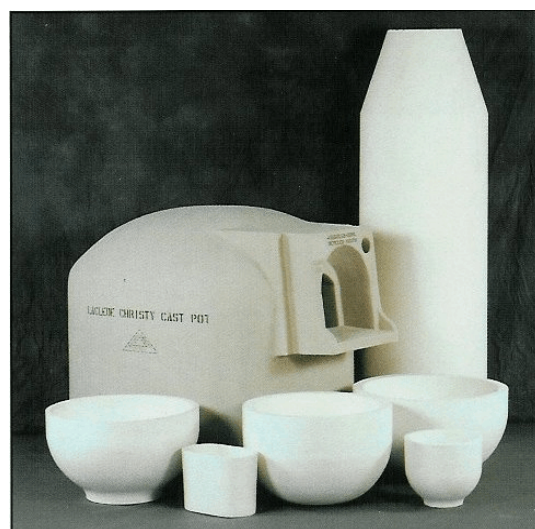


# ***Laclede Christy™ Glasshouse Crucibles***

---

## **Product Information Booklet**



**TW2025/0804 (R-A)**  
[www.emhartglass.com](http://www.emhartglass.com)  
Copyright © 2004 Emhart Glass SA  
All Rights Reserved

**EMHART**GLASS



# A History of Craftsmanship

For more than 140 years, Emhart Glass, has been developing and manufacturing feeder and forehearth refractories for the glass container industry. Formerly known as Laclede Christy Refractories, the Emhart Glass Owensville, Missouri, plant is widely recognized as an industry leader, with a strong commitment to research and development in order to assist customers with making their operations more profitable and productive.

All Emhart Glass refractories are formulated from high-purity, special oxide raw materials which are carefully graded for particular size and distribution. Rigid quality control is maintained throughout all stages of manufacturing. The company has the ability to produce refractories with the properties necessary for any specific glass-making operation. The technical staff provides superior product quality, excellent customer service and continuous product development.

All of the refractories are designed to deliver optimum performance. Materials and processes are controlled to yield a consistently high level of utility. The staff is a team of professionals who are dedicated to reducing your costs through the effective application of the product line.

Emhart Glass' commitment to your success can be seen in our laboratory and plant facilities where people, processes and products are brought together to meet the customer's needs. There is complete in-house capability for raw materials testing, process control and product development. This is enhanced with outside technical support through the facilities of the University of Missouri.

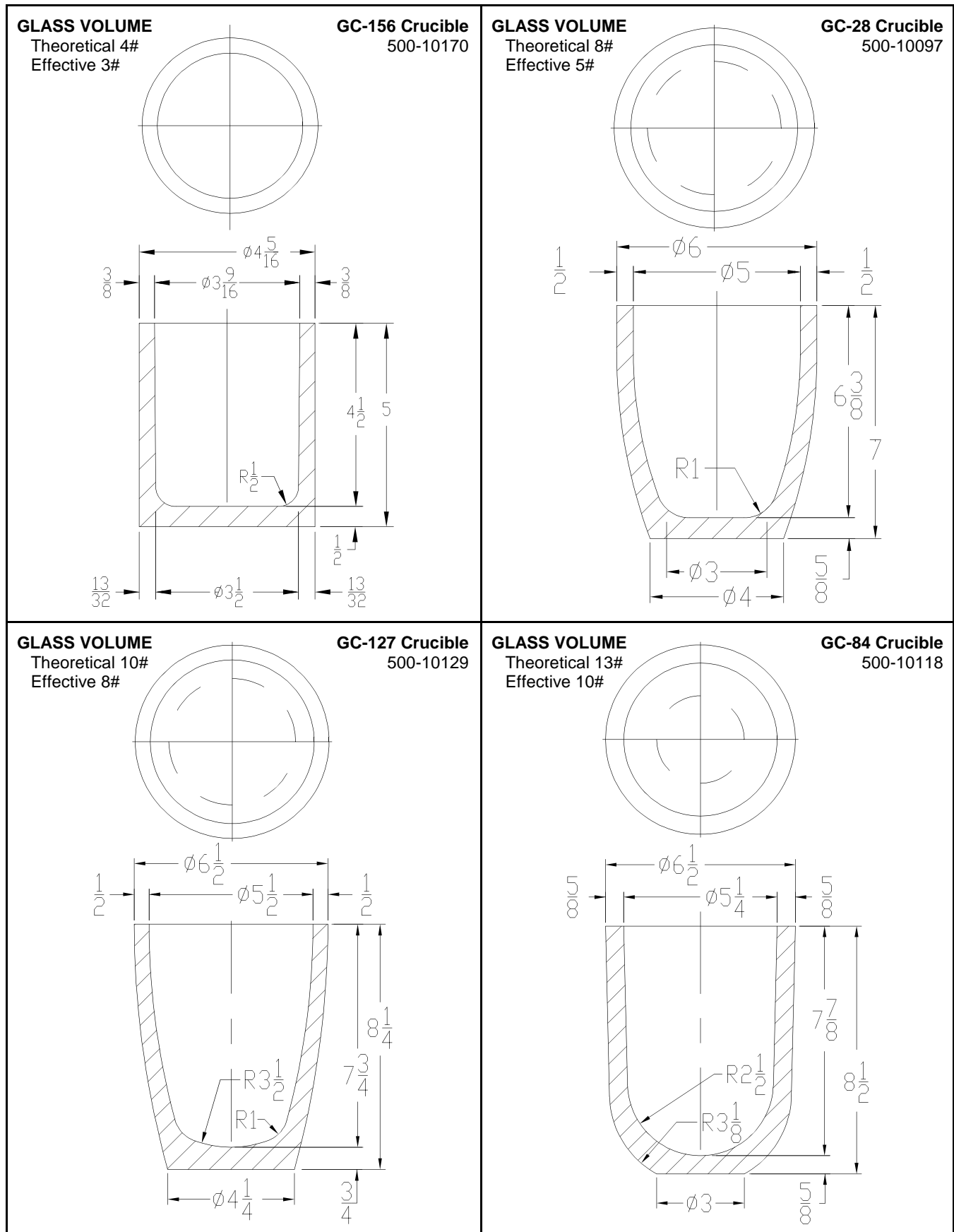
Founded in 1844, Laclede Christy Refractories built a strong relationship with the glass industry. In the early 1980s, Laclede became part of Emhart Glass. This commitment to the glass industry provides our customers with a wealth of proven refractory experience.

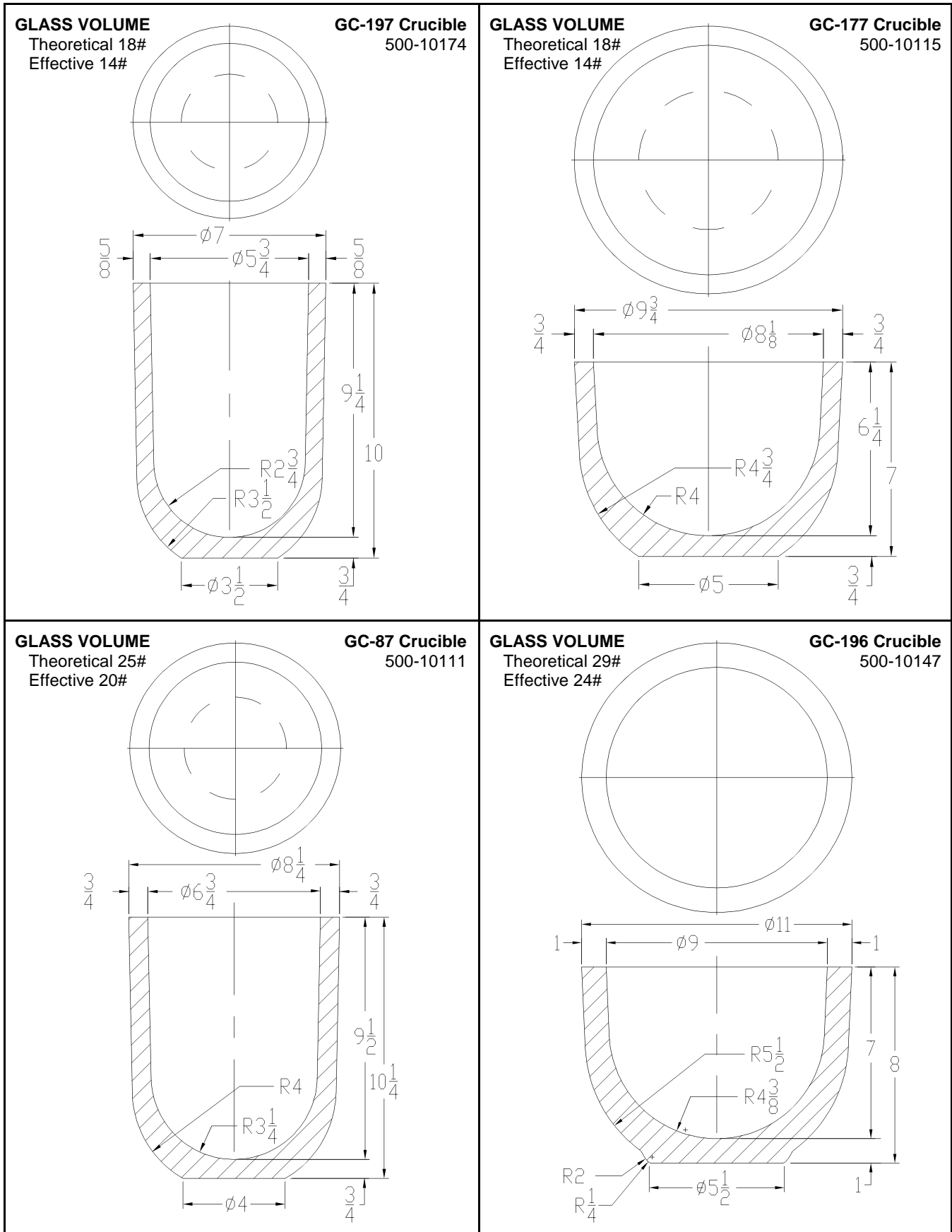
Emhart Glass offers crucibles in a wide range of compositions, sizes, and shapes. This booklet represents only a sample of the most popular compositions. Additional sizes and shapes, as well as custom fabrication, are available upon request.

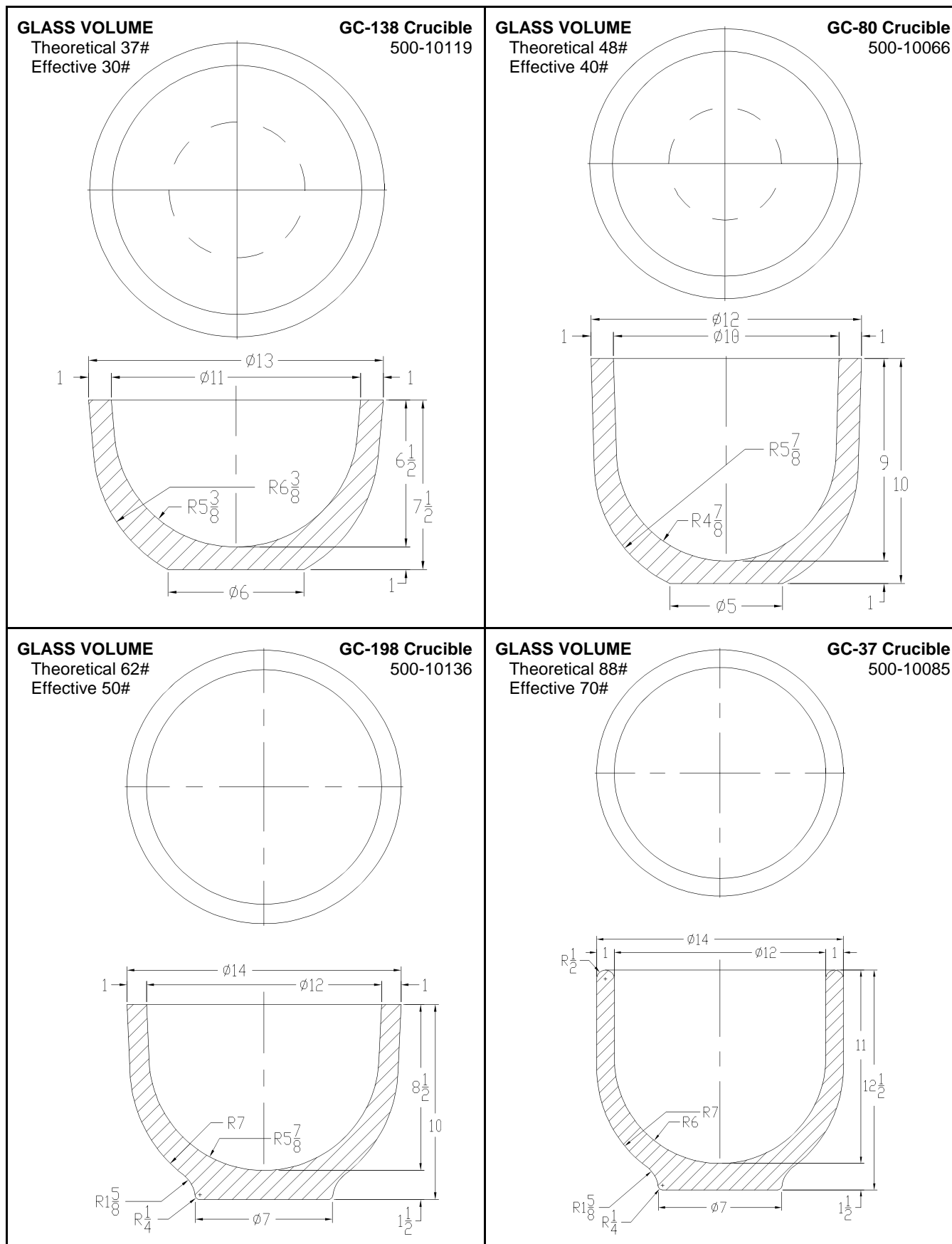
Below is a brief summary of the most popular compositions used in glass melting crucibles for studio shop application:

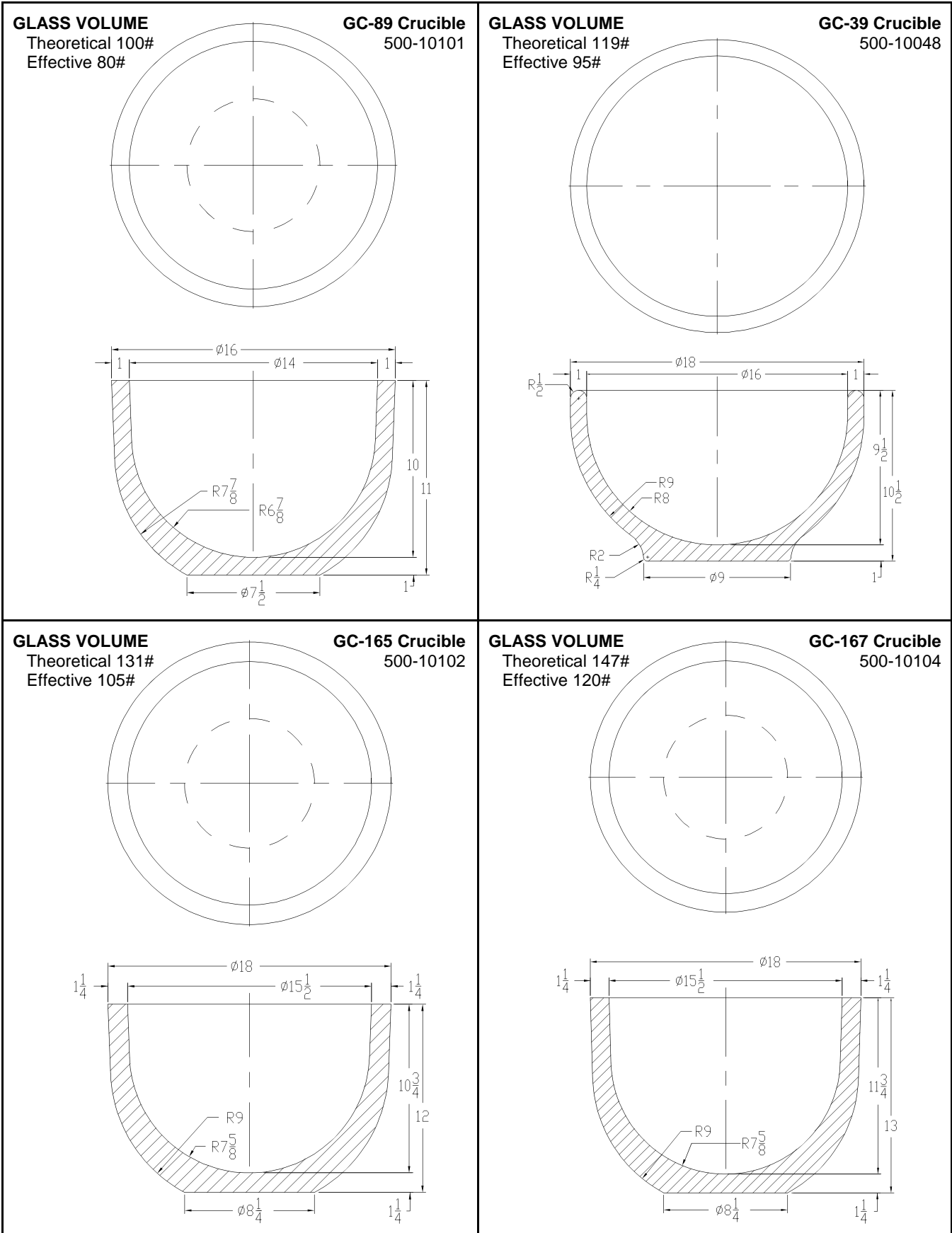
- **FOMLAC** - A fortified mullite formulation and an excellent glass contact refractory. It represents about 70% of all crucibles supplied to the studio shops. FOMLAC has proven itself as an excellent material for the melting of soda lime flint glasses in either batch or cullet form.
- **LC-833** - This a premium AZS composition; designed as a melting medium for a wide range of corrosive glasses, especially those containing higher levels of metallic oxide. About 25% of the crucibles supplied to the studio shops are fabricated in Emhart Glass' LC-833 formulation. It is the material of choice for a host of special glass applications.
- **FUSILLAC 100P** - A fused silica formulation; a product possessing excellent thermal shock resistance. The unique thermal shock resistance characteristics will dissipate upon repetitive thermal cycling through the 2000°F range. It's purity will enable the melting of technical grade glasses without the fear of destructive contamination.

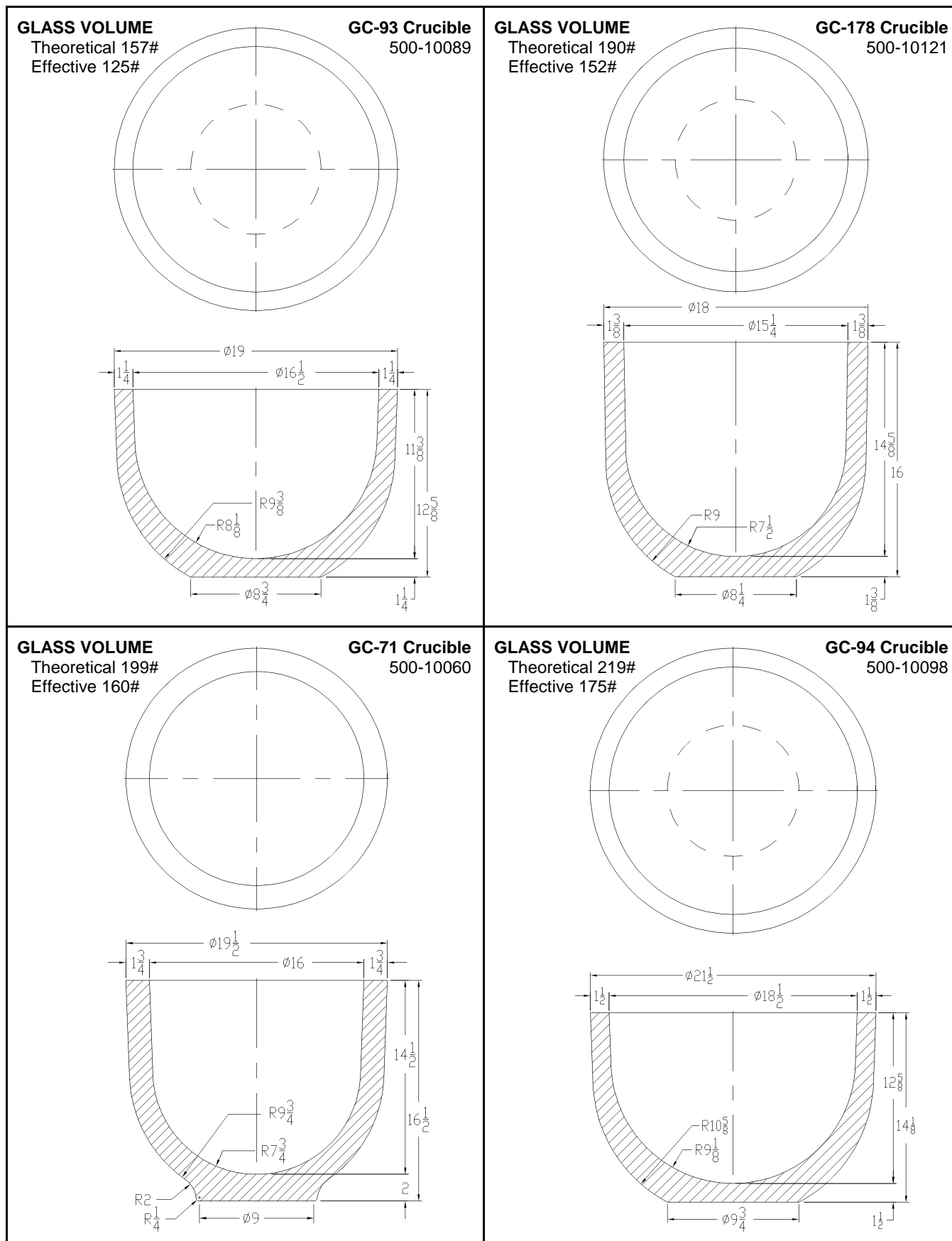
- **211-XFS** - This is a clay flux material and is the formulation developed by Emhart Glass Inc. years ago for the manufacture of pots. It is an excellent glass control refractory and performs well in continuous service applications. This material does require proper furnace management in order to heat to operating temperature. Crucibles, fabricated from the material, are shipped unfired and it is the responsibility of the user to burn them into service.

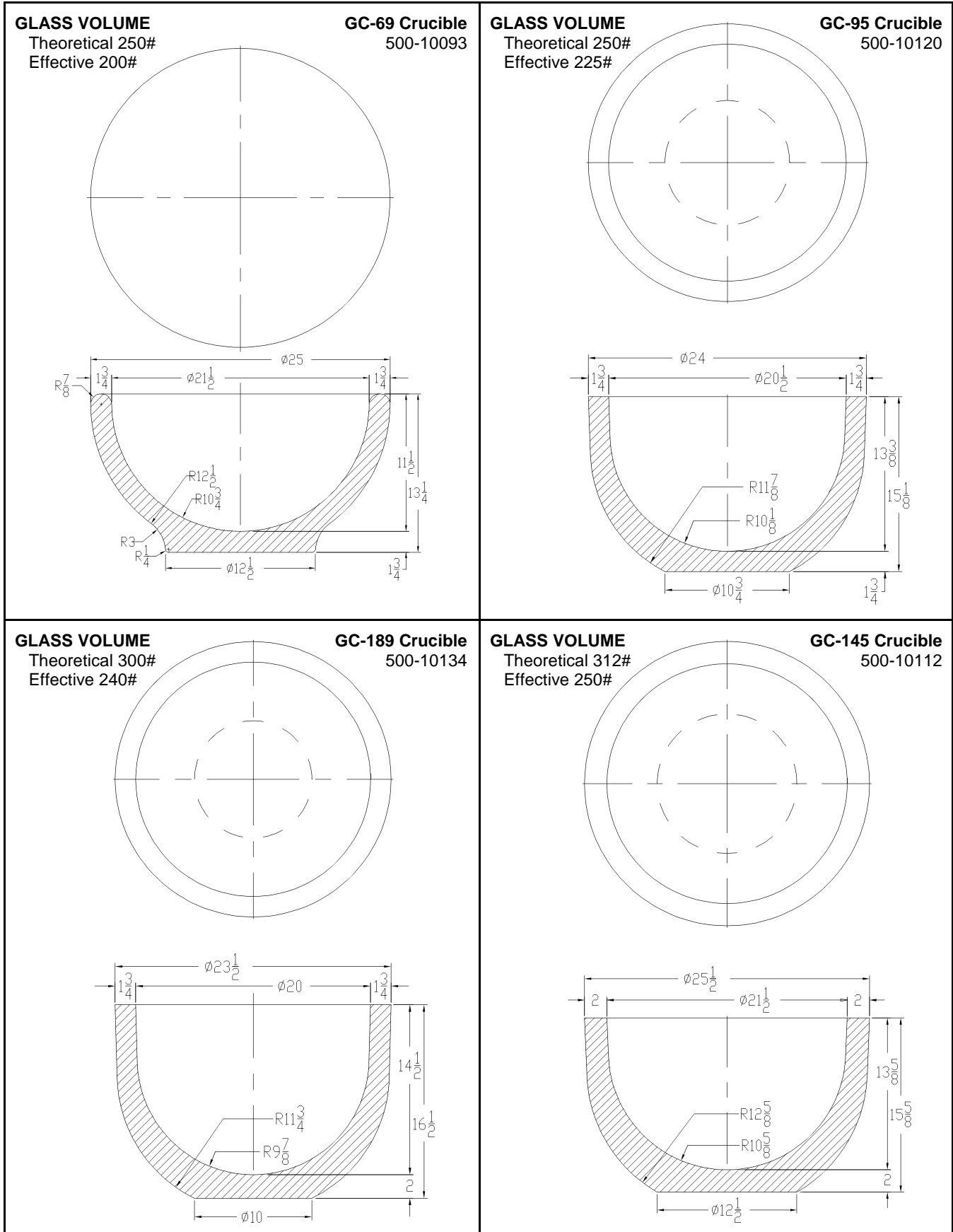


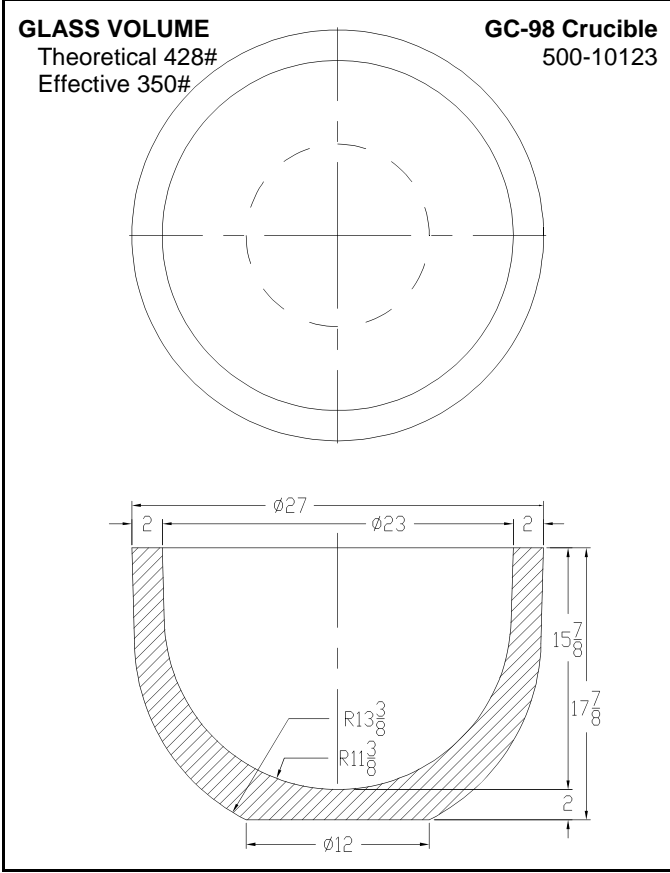
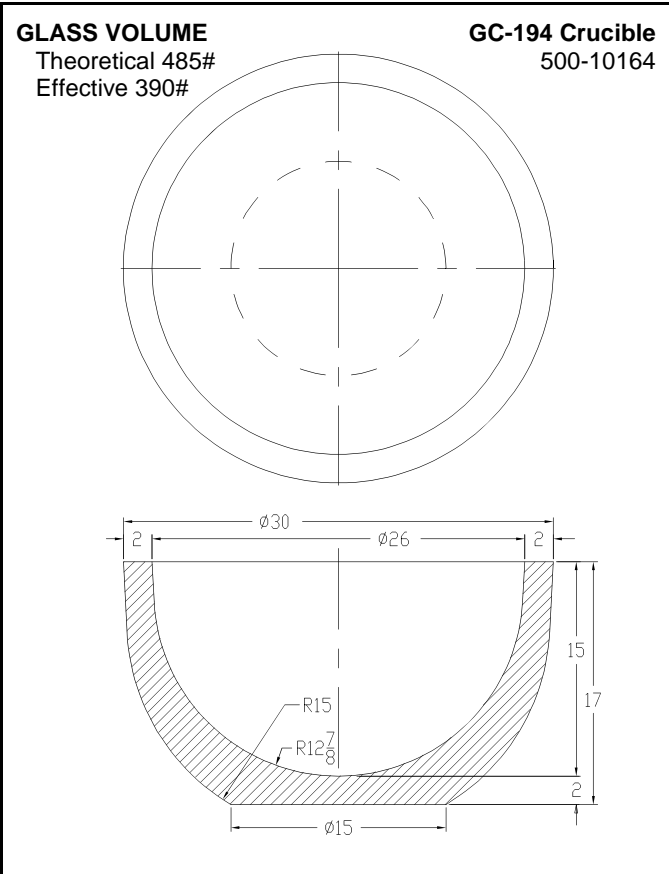
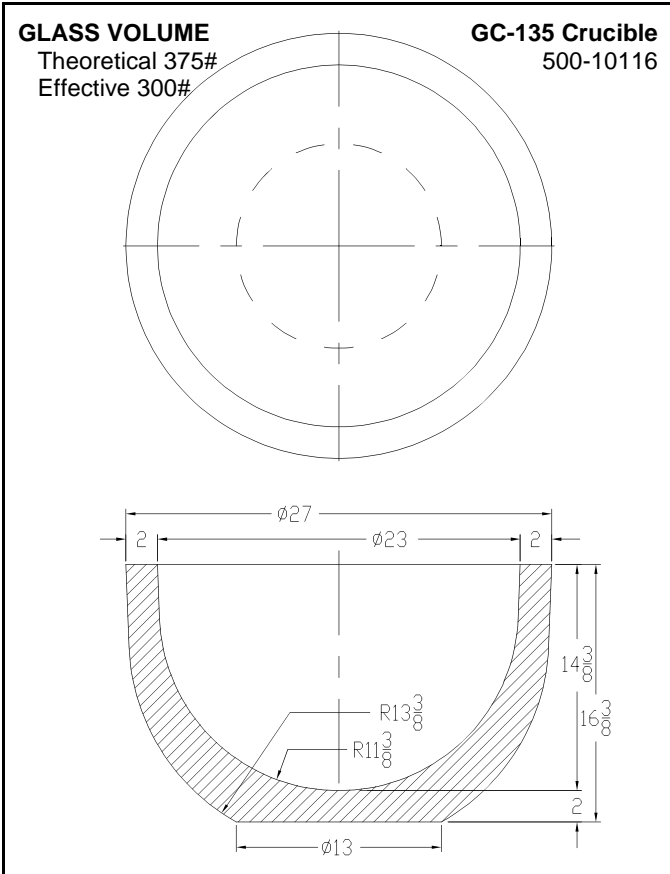












## Contact Information

### Emhart Glass Worldwide Presence

#### Principal

Emhart Glass SA  
 Hinterbergstrasse 22  
 CH-6330 Cham, Switzerland  
 Telephone +41 (41) 749 42 00, Telefax +41 (41) 749 42 71  
[www.emhartglass.com](http://www.emhartglass.com)  
[info@emhartglass.com](mailto:info@emhartglass.com)

#### GERMANY, NEUSS ♦ ■ SWEDEN, ÖREBRO ■

Telephone +49 (2131) 3595 0, Telefax +49 (2131) 3595 125 Telephone +46 (19) 307 500, Telefax +46 (19) 307 501

#### ITALY, DEGO (SAVONA) ♦ ■ SWEDEN, SUNDSVALL ■

Telephone +39 (019) 51 66 1, Telefax +39 (019) 51 66 302 Telephone +46 (60) 199 100, Telefax +46 (60) 199 261

#### JAPAN, KAWASAKI ♦ UK, DONCASTER ♦

Telephone +81 (44) 222 7371, Telefax +81 (44) 222 4868 Telephone +44 (1302) 347 700, Telefax +44 (1302) 327 810

#### RUSSIA, MOSCOW ♦ USA, ELMIRA, NY ■

Telephone +7 (095) 937 78 95, Telefax +7 (095) 937 78 40 Telephone +1 (607) 734 3671, Telefax +1 (607) 734 1245

#### SINGAPORE ♦ USA, ENFIELD, CT ♦

Telephone +65 6778 1466, Telefax +65 6778 9433 Telephone +1 (860) 814 4010, Telefax +1 (860) 814 4170

#### SPAIN, MADRID ♦ USA, OWENSVILLE, MO ■

Telephone +34 (91) 883 6816, Telefax +34 (91) 883 2063 Telephone +1 (573) 437 2132, Telefax +1 (573) 437 3146

♦ Sales Representative ■ Manufacturing Location